



CONVERSATION PARTNERS!!

OLLI MEMBER EDITION

What are Conversation Partners?



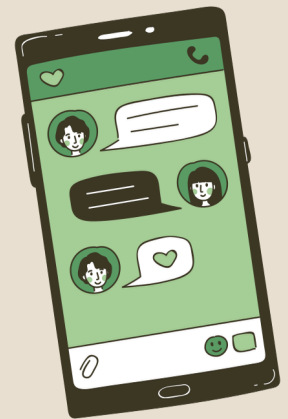
This is a volunteer program that matches you with an English language learner from UNT's Intensive English Language Institute (IELI). You will meet with your partner for at least one hour a week to help them practice English and learn about their cultures and experiences while sharing your own.

IELI has students from all over the world, but participants are most commonly from countries such as Japan, China, Saudi Arabia, the DR Congo, and Korea.

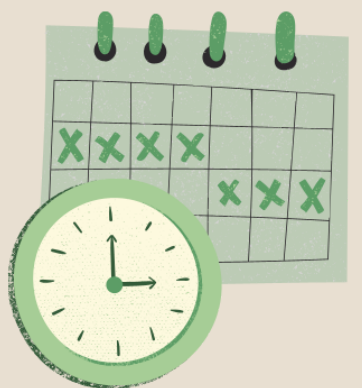


How will I meet my partner?

You will receive your partner's contact information once you have registered for the program. You can register at <https://unt.jotform.com/231925550239053>. You should text or e-mail them to introduce yourself as soon as you receive their contact information.



The interest form has a required field for entering a UNT student ID number. Since OLLI members are not issued UNT student ID numbers, please **enter eight zeroes** in that field in order to submit the form. We also recommend including your participation in OLLI in the "Hobbies & Special Interests" field. Someone from IELI will be in contact with you once you have registered for the program.



When do we meet?

You and your partner will choose a time and place to meet each other that works for both of you. Try to find a time that will work for both you and your partner each week.



Where can I meet my partner?

For convenient parking, you might consider meeting in Froth Coffee and Dessert Bar, which is located just around the corner from our UNT classroom location in Denton. OLLI members receive a 10% discount by showing their OLLI ID card at this location. Please visit FrothDenton.com for further information regarding their menu or location.

